



**FEED HOPE & NOURISH MAUI,
FROM FARM TO HUNGRY, WITH LOVE!**

HHHMAUI.ORG - @HHHMAUI



Our Mission

We are dedicated to addressing basic human needs; **food, water, and shelter** for those facing hardship and food insecurity. Through self-organization and community stewardship, we envision a thriving Maui where we support one another, rooted in the spirit of Aloha 'Āina.





How We Serve

Food sourced from local **Maui farms**, prepared with love by **volunteers**, and **shared freely** with those in need creates a meaningful connection from land to heart, inspiring hope and nourishing the community.

We have found that when essentials are met, individuals can access their innate talents and inherent genius, fostering a collaborative and thriving community culture that grows naturally.





Our Story

From Pandemic to Fire Response

Founded during the pandemic in 2020, initially delivering meals to the unsheltered and gathering surplus produce from local farms.

Pivot in Response to Crisis: Expanded operations following the Maui wildfires in 2023. Grew from 20 to over 800 volunteers overnight to meet the growing need.

40000
lbs of produce /week

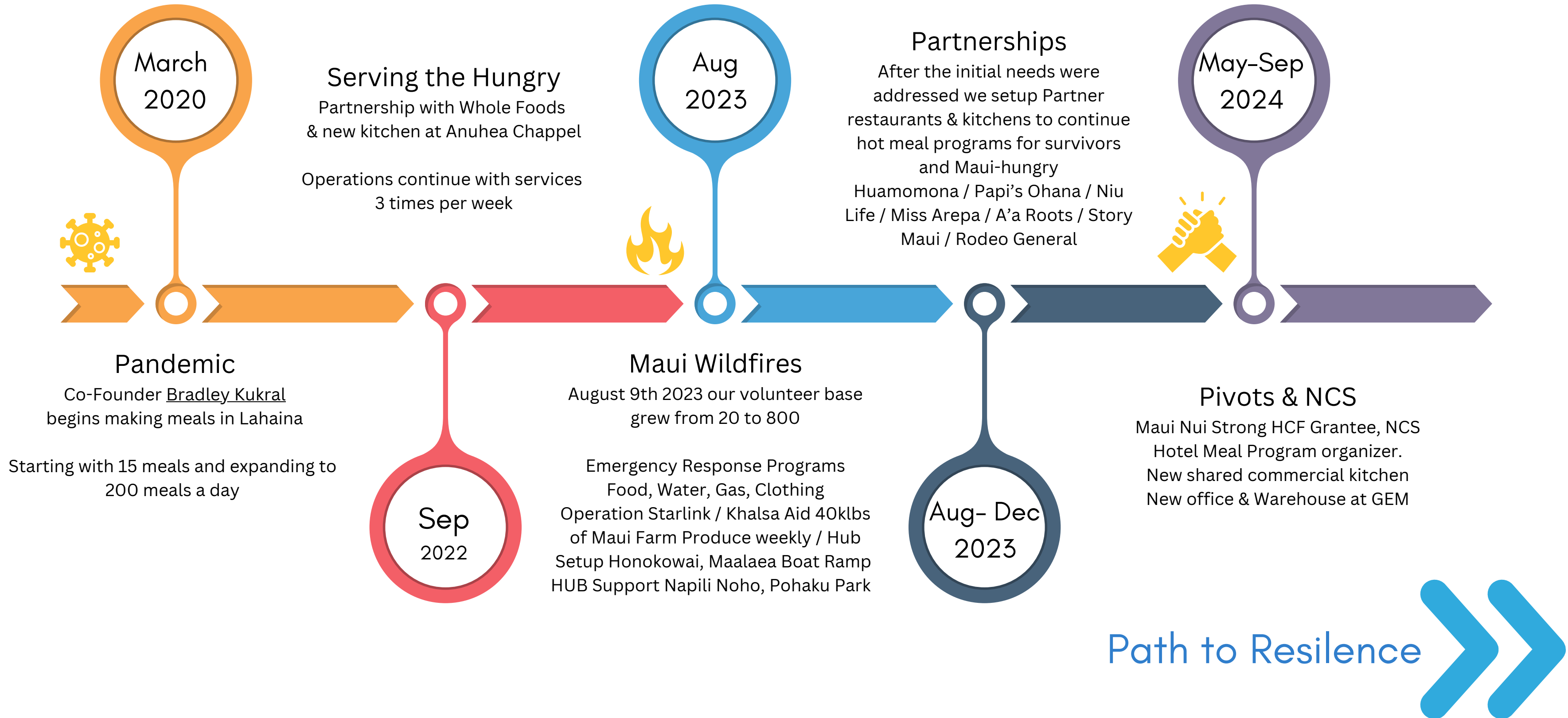
2000
meals a day

2231
volunteers

3450
contributors



Our Journey So Far





Our Programs



Meals & Kitchens

We prepare and serve daily meals to the displaced and vulnerable through community kitchens and partner restaurants.



Volunteer Network

We engage volunteers and local businesses to create a community support system. Using web technology we quickly deploy resources & coordinate responses.



Maui Farm Produce

We collaborate with Khalsa Aid, Local Harvest and Maui farmers to bring fresh produce to kitchens, hubs, and directly to families in need of support.



Program Partnerships

Through our partnerships with MEO for staffing and GEM for office space, we are building continuity, expanding resources, and fostering long-term sustainability.



What We Do

FARMS & SUPPLIERS



WE COLLABORATE WITH MAUI FARMS & FOOD SUPPLIERS TO BRING FRESH PRODUCE TO THE COMMUNITY, KITCHENS & HUBS.



MEALS & KITCHENS



WE PREPARE AND SERVE NOURISHING MEALS TO THE UNSHELTERED AND DISPLACED, FROM MULTIPLE COMMUNITY KITCHENS & PARTNER RESTAURANTS.



COMMUNITY & VOLUNTEERS



WE PARTNER WITH VISITORS, MAUI VOLUNTEERS, LOCAL BUSINESSES, AND ORGANIZATIONS TO EXPAND COMMUNITY RESPONSE, RESILIENCE & IMPACT.





Partners





Partners

RESTAURANT PARTNERS



COMMUNITY RELIEF & RESILANCE PARTNERS





Infrastructure Partners



We partner with key non-profits organizations that support our infrastructure, staff, office, kitchens and operating budget.



Food Supply



MAUI FOOD BANK
Helping the Hungry



Whole Foods. Whole People. Whole Planet



HUA MOMONA
FOUNDATION
WE GROW BETTER TOGETHER



KHALSA AID
"RECOGNISE THE WHOLE HUMAN RACE AS ONE"



Most of our food comes from **Maui-based farms**, with 50% of our produce funded by Khalsa Aid through Local Harvest, a Maui Farm Co-op warehouse. The remaining support comes from Maui Food Bank, Whole Foods, and private donations.



Why we do it?

"EVERY CHILD DESERVES A FULL STOMACH AND A HEART FULL OF HOPE."

IN THE AFTERMATH OF THE WILDFIRES, ACCESS TO NUTRITIOUS FOOD IS ESSENTIAL FOR FAMILIES REBUILDING THEIR LIVES. A CHILD'S ABILITY TO GROW, LEARN, AND THRIVE DEPENDS ON FOOD SECURITY—WITHOUT IT, BOTH HEALTH AND POTENTIAL ARE AT RISK. TOGETHER, WE CAN PROVIDE THE NOURISHMENT NEEDED TO HEAL, UPLIFT, AND STRENGTHEN OUR COMMUNITY, ENSURING NO ONE IS LEFT BEHIND.





Why we do it?

SUPPORTING THE HOUSELESS & DESTITUTE

SUPPORT TO THE HOUSELESS AND THOSE IN DESPERATE NEED, RAISING THE COLLECTIVE HUMANITY OF OUR COMMUNITY. WHEN WE LIFT THE LOWEST BAR, WE ALL RISE TOGETHER—LIKE A TIDE THAT LIFTS ALL SHIPS. BY ADDRESSING THESE URGENT NEEDS, WE CONTRIBUTE TO COMMUNITY BEAUTIFICATION AND CRIME PREVENTION, ENSURING NO ONE HAS TO ENDURE THE INDIGNITY OF FINDING THEIR NEXT MEAL IN THE TRASH.

FIRE SURVIVORS AND ALICE

MAUI FIRE SURVIVORS, THE ALICE POPULATION, AND THOSE SUFFERING FROM ECONOMIC HARDSHIPS NEED A HAND TO STAY AFLOAT. WITHOUT TIMELY ASSISTANCE DURING CRISES, INDIVIDUALS CAN SLIP THROUGH THE CRACKS AND EXPERIENCE A GRADUAL DECLINE THAT MAY LEAD TO HOMELESSNESS. NO ONE SUDDENLY BECOMES HOMELESS—IT'S A SERIES OF HARDSHIPS WITHOUT INTERVENTION. OUR WORK IS ABOUT PROVIDING THAT SUPPORT AND SAFETY NET DURING CHALLENGING TIMES TO KEEP INDIVIDUALS AND FAMILIES FROM FALLING FURTHER.





Why we do it?

SUPPORTING MAUI FARMERS & FOOD SOVEREIGNTY

NURTURING LOCAL AGRICULTURE FOR A RESILIENT FUTURE WE SUPPORT MAUI FARMERS AND PROMOTE FOOD SOVEREIGNTY TO ENSURE A HEALTHY, SUSTAINABLE COMMUNITY.

INVESTING IN LOCAL AGRICULTURE STRENGTHENS OUR FOOD SUPPLY CHAIN, MAKING IT MORE RESILIENT IN TIMES OF EMERGENCY AND CRISIS. WHEN WE PRIORITIZE LOCAL FOOD SOURCES, WE CREATE A SYSTEM THAT SUSTAINS US, BUILDS ECONOMIC STABILITY, AND PROTECTS OUR ISLAND FROM DISRUPTIONS.

BY EMPOWERING FARMERS, WE NOT ONLY FOSTER A HEALTHIER MAUI BUT ALSO ENSURE THAT, WHEN TIMES ARE TOUGH, OUR COMMUNITY REMAINS NOURISHED AND SECURE.

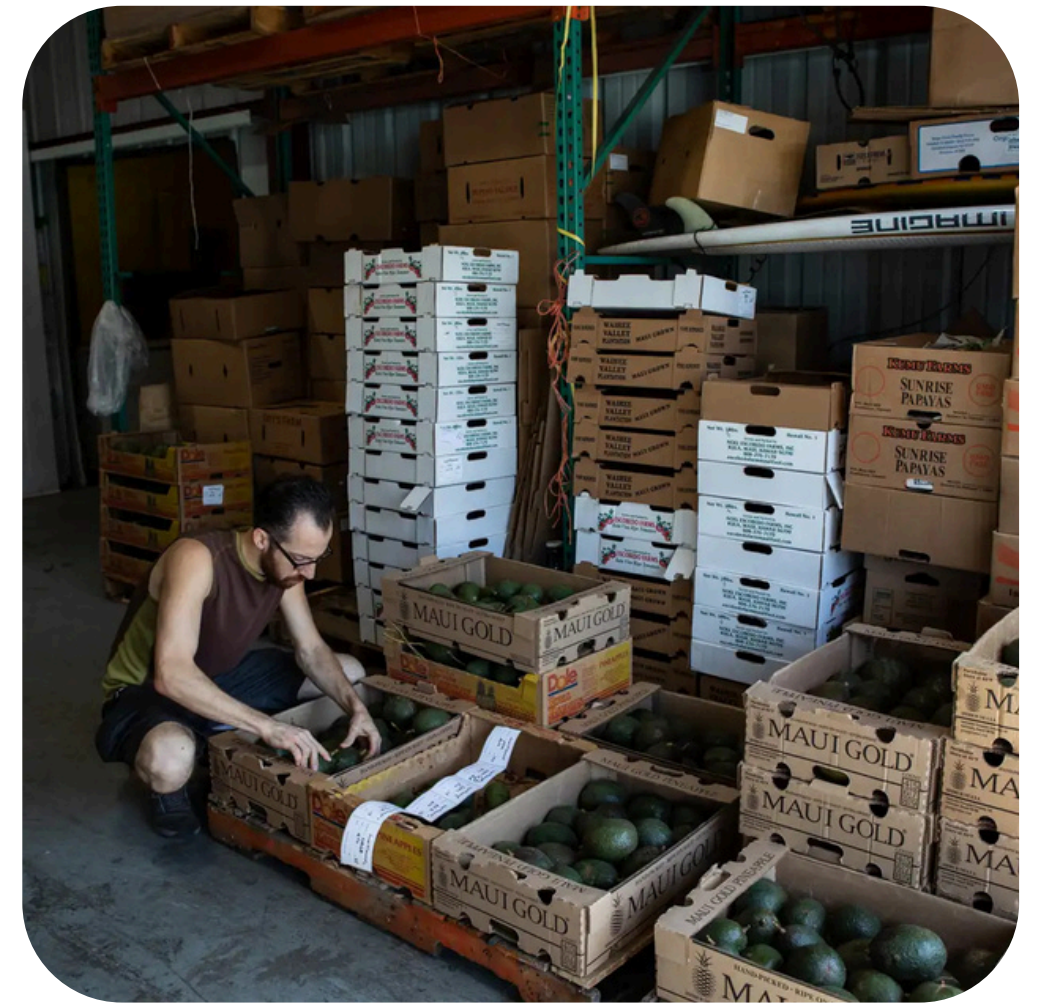




Community is the immunity

Together, we can overcome challenges and achieve more by supporting one another. We believe in the power of a shared vision, harnessing our unique strengths and collaborating for lasting impact.





Maui Farmed Produce

Fresh, locally-sourced produce is delivered to Maui fire survivors, creating a win-win scenario by supporting local farmers and promoting food sovereignty to build a resilient, self-sustaining community.

221,378 lbs delivered

In the immediate aftermath of the Maui wildfires, we mobilized quickly to distribute over 10,000 pounds of produce twice a week, to kitchens, community hubs, and families affected by the disaster.



Nurishing Meals
Meals are vital during crises because they provide more than just nourishment; they offer comfort, connection, and a sense of normalcy.

560,415 meals delivered

Across all cultures, gathering around a meal fosters community and shared strength, helping people feel supported and less alone. In times of hardship, a warm, nutritious meal can be a beacon of hope, reinforcing bonds and resilience within the community.



People Power
Maui united as locals and visitors came together, offering time, resources, and support. This collective effort showcased the island's aloha spirit and strengthened community bonds during challenging times.

2231 volunteers mobilized

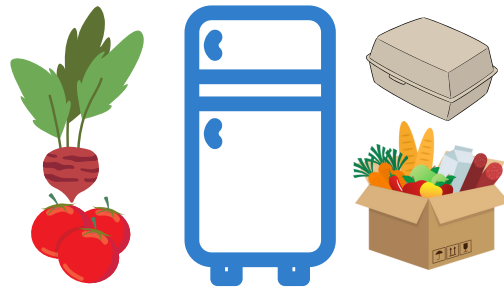
During our relief efforts, volunteers joined our organization, contributing to various programs based on their skills and abilities. We see a powerful opportunity to bridge the gap between tourism and sustainability by fostering volunteerism. Engaging visitors in meaningful community efforts not only strengthens Maui's resilience but also promotes a deeper connection and shared responsibility for the island's well-being.



The Road Ahead Where We're Going

CURRENT FOCUS:

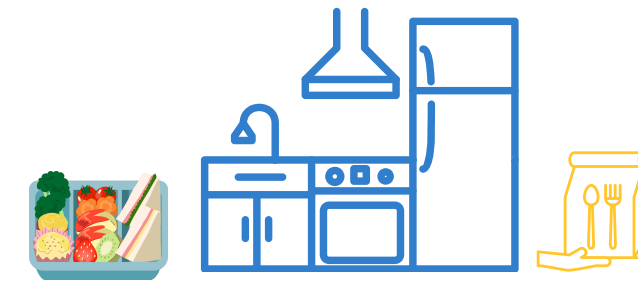
- ✔ STRENGTHENING FOOD SECURITY THROUGH MAUI-FARMED PRODUCE
- ✔ IMPROVING KITCHEN OPERATIONS TO SUPPORT THE HOT MEALS PROGRAM
- ✔ BUILDING RELATIONSHIPS WITH FUNDING SPONSORS TO SUSTAIN PROGRAMS



MAUI COMMUNITY FRIDGE COLLECTIVE

**REACH MORE FAMILIES CAUGHT IN THE
FALLOUT WHILE UPLIFTING THE
COMMUNITY SUFFERING FROM THE
ECONOMIC DECLINE**

PILOT PROGRAMS:



MAUI CENTRAL KITCHEN

**INCREASE MEAL CAPACITY, PUT VOLUNTEERS TO
WORK, OPEN THE KITCHEN TO PARTNER
ORGANIZATIONS, AND CREATE DONATION-BASED
PRODUCTS TO SUSTAIN OUR PROGRAMS**



Path to Resilience



WHO IS ALICE?
Asset Limited - Income Constrained - Employed



Pilot Programs

MAUI COMMUNITY FRIDGE COLLECTIVE



MAUI CENTRAL KITCHEN



Why this program is important

The ALICE community—**Asset Limited, Income Constrained, Employed**—faces significant risks from crises like Maui Wildfires, illness, family or financial burdens, and rising costs, which can lead to instability and eventual homelessness.

Supporting helps prevent homelessness and ensures families and individuals receive nutrition and moral support. The Maui Community Fridge Collective programs play a vital role in offering consistent access to food, fostering stability, and strengthening community resilience.

Why this program is important

Witnessing homelessness and community members suffering affects us all—it challenges our collective humanity. When we uplift those most vulnerable, we strengthen our entire society. Our kitchen not only addresses **immediate food needs** but also stands ready for **emergency response**, ensuring meals are available in any crisis.

Beyond emergency aid, this kitchen will be a shared resource for community programs across Maui, fostering collaboration and resilience. Additionally, developing donation-based products will help sustain our efforts, ensuring continued support for those in need.



We need you!

Volunteer, Donate, or become a program sponsor!

Your support is vital to keep our essential programs running. By sponsoring our initiatives, you contribute directly to strengthening food security, sustaining our kitchen operations, and providing vital resources for those facing hardship.

Your partnership helps ensure fresh, local produce reaches families, hot meals continue for the hungry, and new projects, like our community fridge program, become a reality.

Together, we can create lasting change and a resilient, thriving Maui. We need your commitment to keep this mission alive—join us in uplifting our community.

A close-up photograph of a person wearing glasses and a black t-shirt with a white and blue floral pattern. They are using wooden chopsticks to stir a large stainless steel pot filled with a colorful vegetable and meat mixture. The background is a blurred kitchen setting.

When you talk about food people
don't want a solution one week from
now, one month from now.
The solution has to be now.



Ways You Can Help



SUPPLIES AND WISHLIST

Amazon Wishlist

Your generous contributions of supplies or items from our Amazon Wishlist go directly to stocking our kitchens and supporting our relief efforts.

Every item you donate plays a vital role in sustaining our programs and providing immediate aid to those who need it most.



FINANCIAL DONATION

Single or Recuring Donation

Your one-time or recurring financial donations empower us to continue preparing meals, delivering produce, and offering support to Maui communities. With your help, we can extend our reach, maintain operations, and respond quickly during times of crisis.



PROGRAM SPONSOR

Fund a Fridge or Kitchen

By sponsoring a program like a community fridge or kitchen, you help lay the foundation for sustainable support and long-term community resilience. Your sponsorship ensures we can expand our services, nourish more individuals, and fortify our mission to serve Maui.



Meet the Leadership Team

Together we grow

Rachel, Naim, and Sophelia each bring unique strengths and **diverse skills** to the table, creating a dynamic team that embodies dedication, compassion, and vision.

Rachel, our Executive Director, ensures everything runs smoothly with her unwavering commitment and meticulous attention to detail. From HR and accounting to volunteer operations, she keeps everything on track and the team accountable.

Naim, co-founder and community leader, brings experience in tech, media, and manufacturing, along with deep ties in the community, with a mission to connect people, place, and purpose.

Sophelia, born and raised in Maui, brings deep roots in community service. Her expertise in organizational development and people management ensures our programs stay impactful, efficient, and reliable.

Together, they form a strong, collaborative team that leads with heart and drives forward the mission of our programs.



Rachel Tarver
Executive Director



Naim Ferguson
Co-Founder
Director of Impact



Sophelia Oberlander
Director of Operations

Meet the Leadership Team

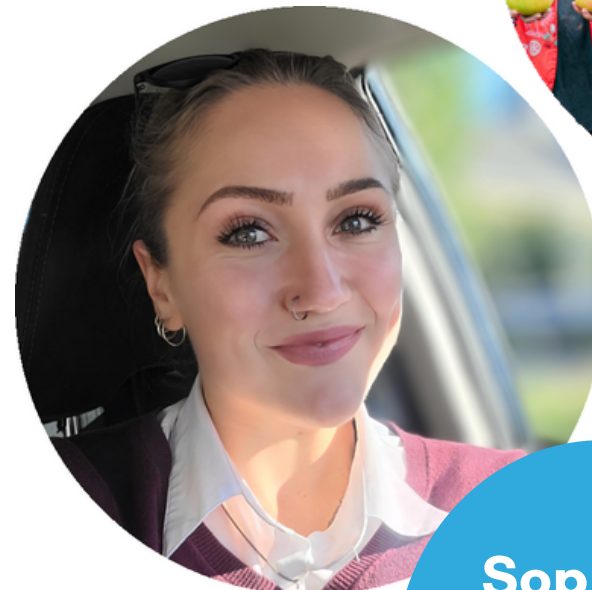
Together we grow

Rachel, Naim, and Sophelia each bring unique strengths and **diverse skills** to the table, creating a dynamic team that embodies dedication, compassion, and vision.



Rachel Tarver
Executive Director

Rachel, our Executive Director, ensures everything runs smoothly with her unwavering commitment and meticulous attention to detail. From HR and accounting to volunteer operations, she keeps everything on track and the team accountable.



Sophelia Oberlander
Director of Operations

Sophelia, born and raised in Maui, brings deep roots in community service. Her expertise in organizational development and people management ensures our programs stay impactful, efficient, and reliable.

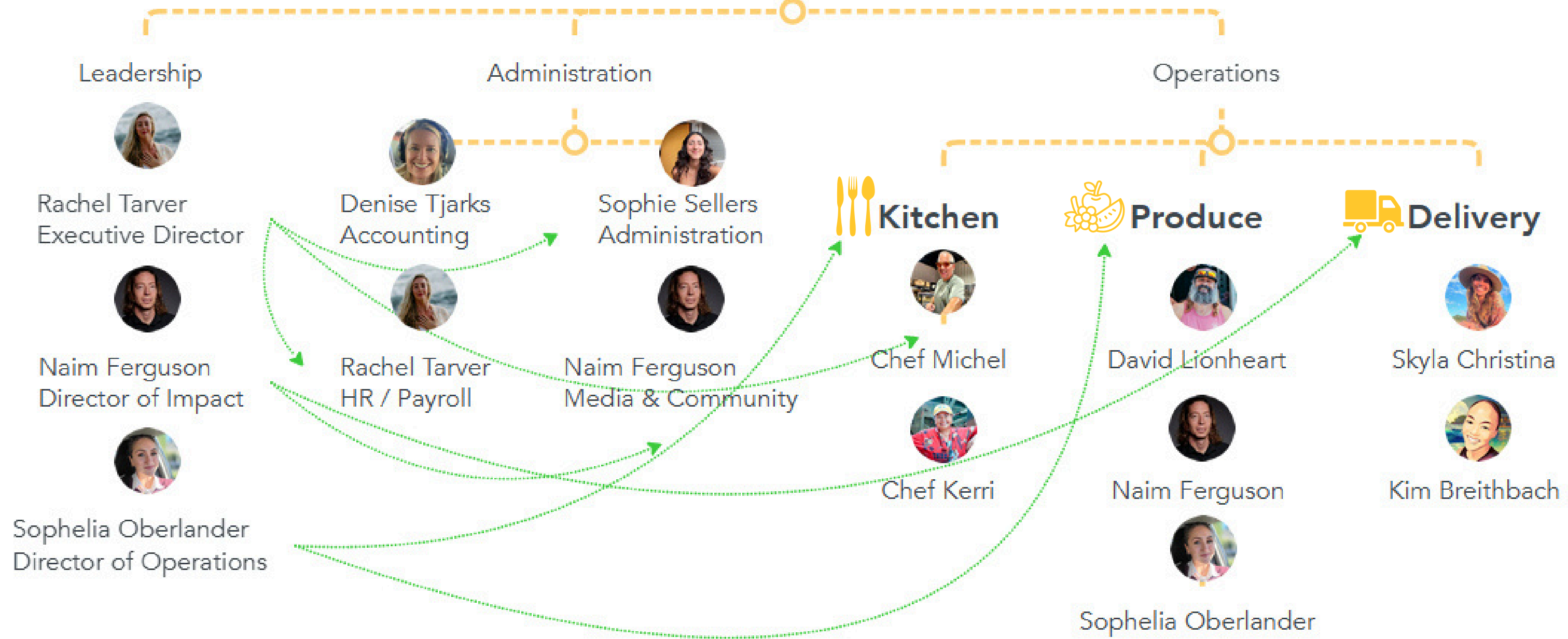


Naim Ferguson
Co-Founder
Director of Impact

Naim, co-founder and community leader, brings experience in tech, media, and manufacturing, along with deep ties in the community, with a mission to connect people, place, and purpose.

Together, they form a strong, collaborative team that leads with heart and drives forward the mission of our programs.

HHH TEAM





Where to Find Us





Get in touch!

Naim, Rachel, and Sophelia are available to answer any questions, provide a tour of our operations, and meet with you to share our vision. We aim to foster partnership, connection, and ensure accountability to our mission and your valued contribution.

 349 Hanakai Street, Kahului, HI 96732

 808-276-6673

 aloha@hhhmaui.org

 HHHmaui.org



MAHALO

**THANK YOU FOR YOUR TIME AND CONSIDERATION IN
SUPPORTING OUR PROGRAMS AND COMMUNITY RESILIENCE.
WE NEED YOU TO HELP CONTINUE THIS MISSION AND MAKE A
LASTING IMPACT.**

TOGETHER, WE CAN CREATE MEANINGFUL CHANGE.